



MIDLAND
REDEVELOPMENT
AUTHORITY



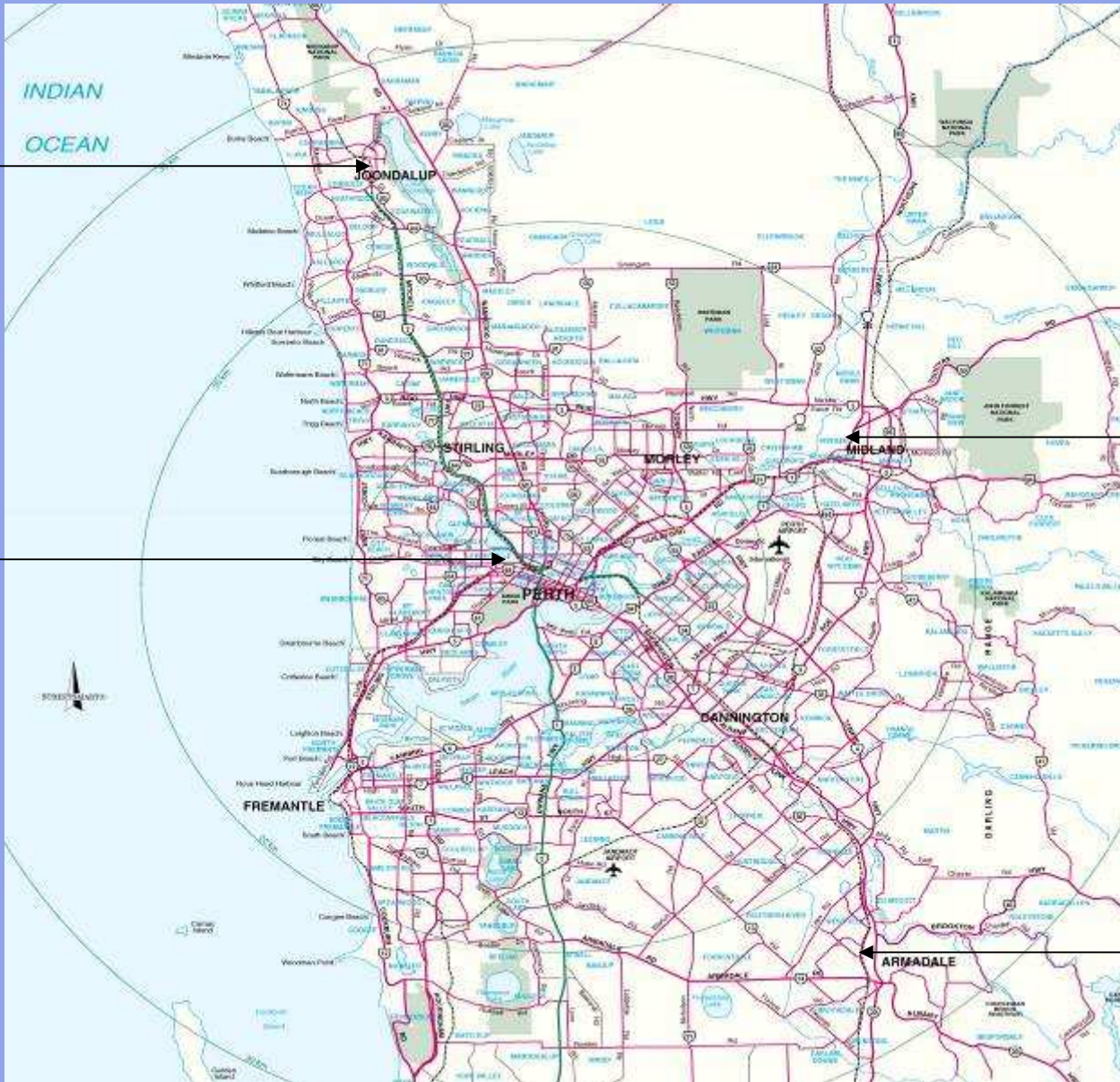
midlandmetro
Be a part of Midland's renaissance

Midland Revitalisation Charrette 8 Years On

Australian Congress for New Urbanism

ACNU
sydney

Joondalup



Subiaco

Midland

Armadale

Source: DOLA StreetExpress 2002

Australian Congress for New Urbanism



midlandmetro
Be a part of Midland's renaissance

ACNU
sydney

MIDLAND



- **Midlands mostly State Government suburbs have been in decline.**
- **There has been little expansion of residential catchment.**
- **New suburbs leapfrog out into Swan Valley.**
- **Midland's main shopping centres have turned inward from the streets turning their backs on the town.**



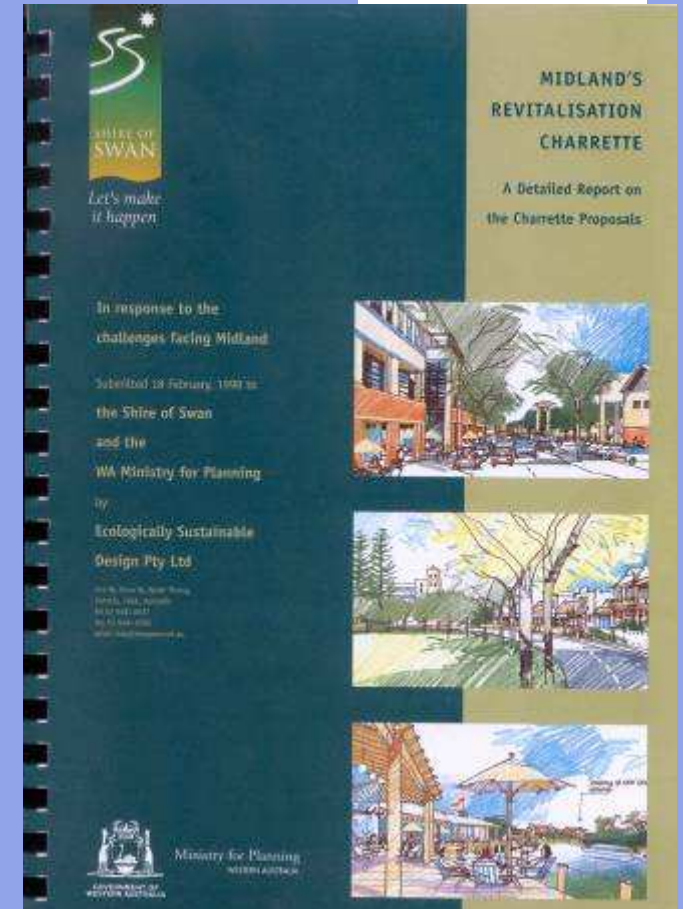
A TOWN HITS CRISIS

- In the mid 80's the Midland Abattoir closed (approx 3000 jobs)
- In 1994 the Railway Workshops were closed after 90 years of operation (approx 3500 jobs).
- Traffic management problems, low quality environments, poor infrastructure co-ordination, crime perceptions and low socio-economic issues had all but stopped new investment in the town.



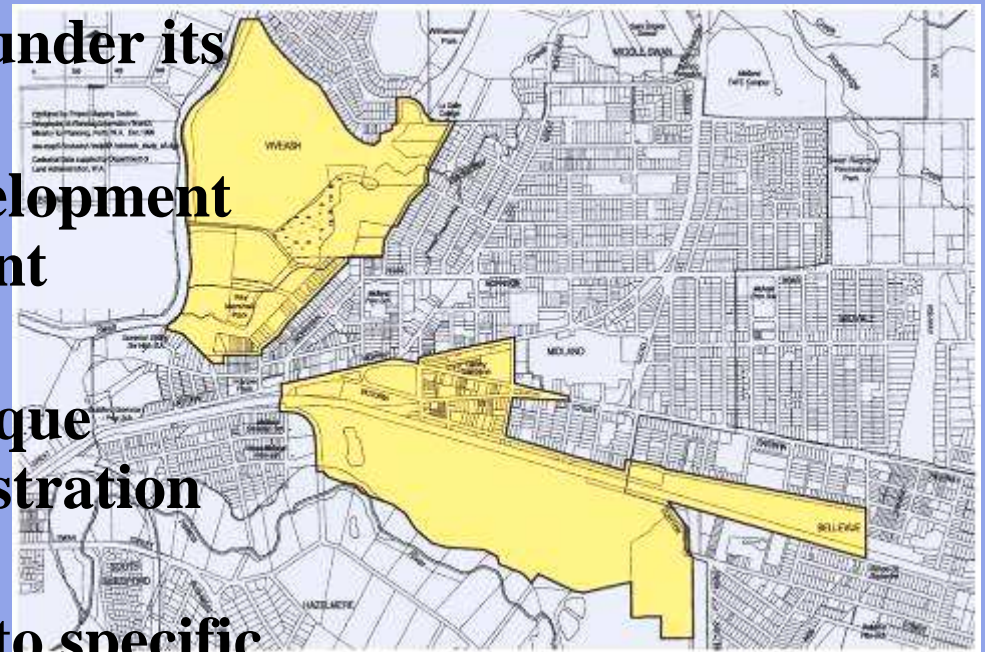
INTEGRATED RESPONSE

- In 1997 the Midland Charrette was held to generate ideas for revitalisation.
- Reviewed possible uses for Railway Workshops.
- Realisation the problem was bigger than just a vacant government site.
- The Charrette recommended the establishment of a redevelopment authority. Government was pursued strongly on this matter by the Council and business community.
- In 2000 the Midland Redevelopment Authority was established.



THE MRA

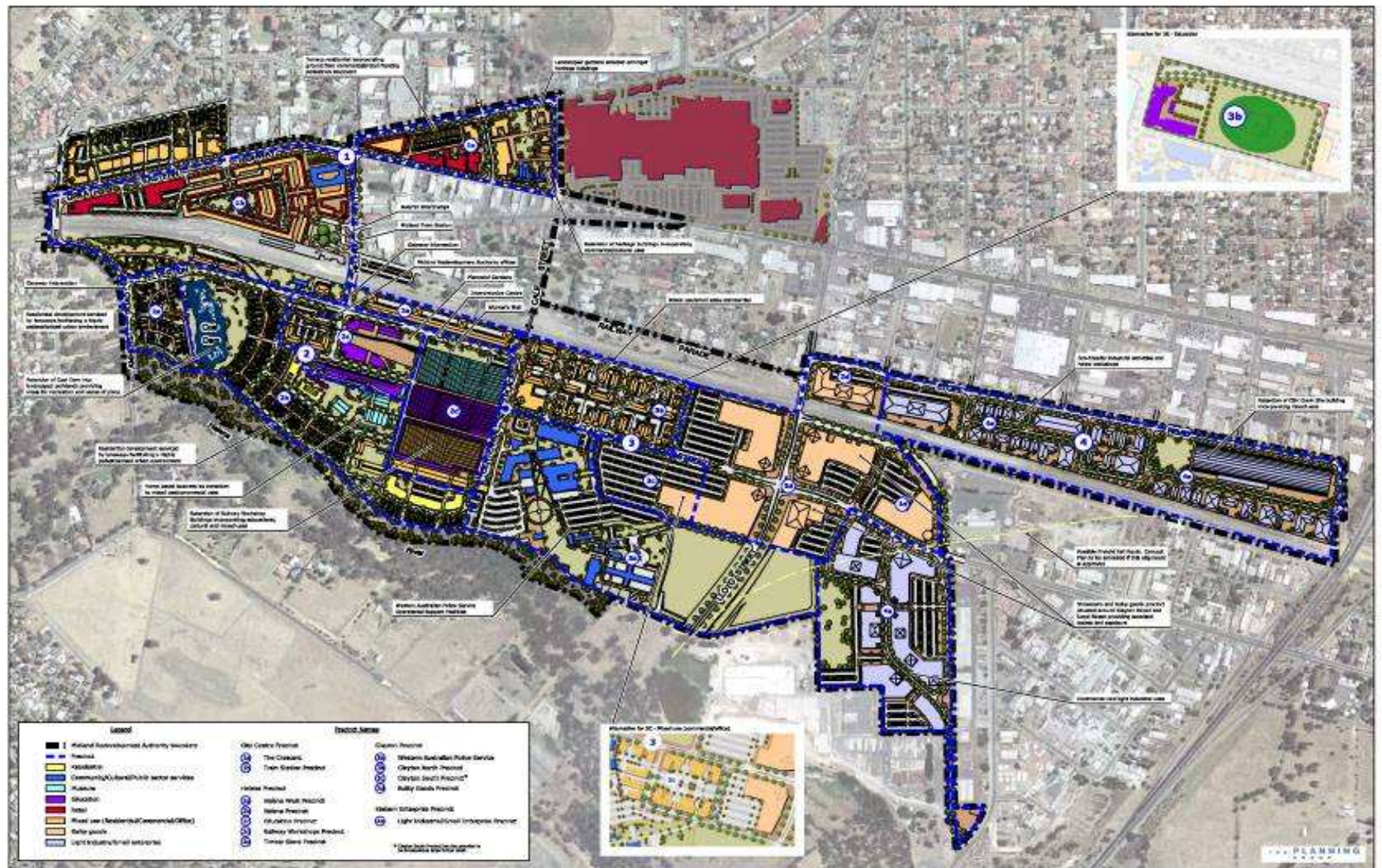
- **Midland Redevelopment Authority is established under its own Act.**
- **The Authority has a development and planning management responsibility.**
- **The Authority is in a unique position to create demonstration projects.**
- **The MRA is responding to specific local conditions.**



MRA - GUIDING OBJECTIVES



- **Play a major role in Midland's revitalisation and better enable it to serve as a strategic regional centre.**
- **Integrate development in central Midland to achieve a coordinated outcome – maximum benefits for the city and its community.**
- **Enhancement of environmental, social, heritage and cultural values within the redevelopment area.**
- **Maximise economic benefits to the State, region and city centre.**

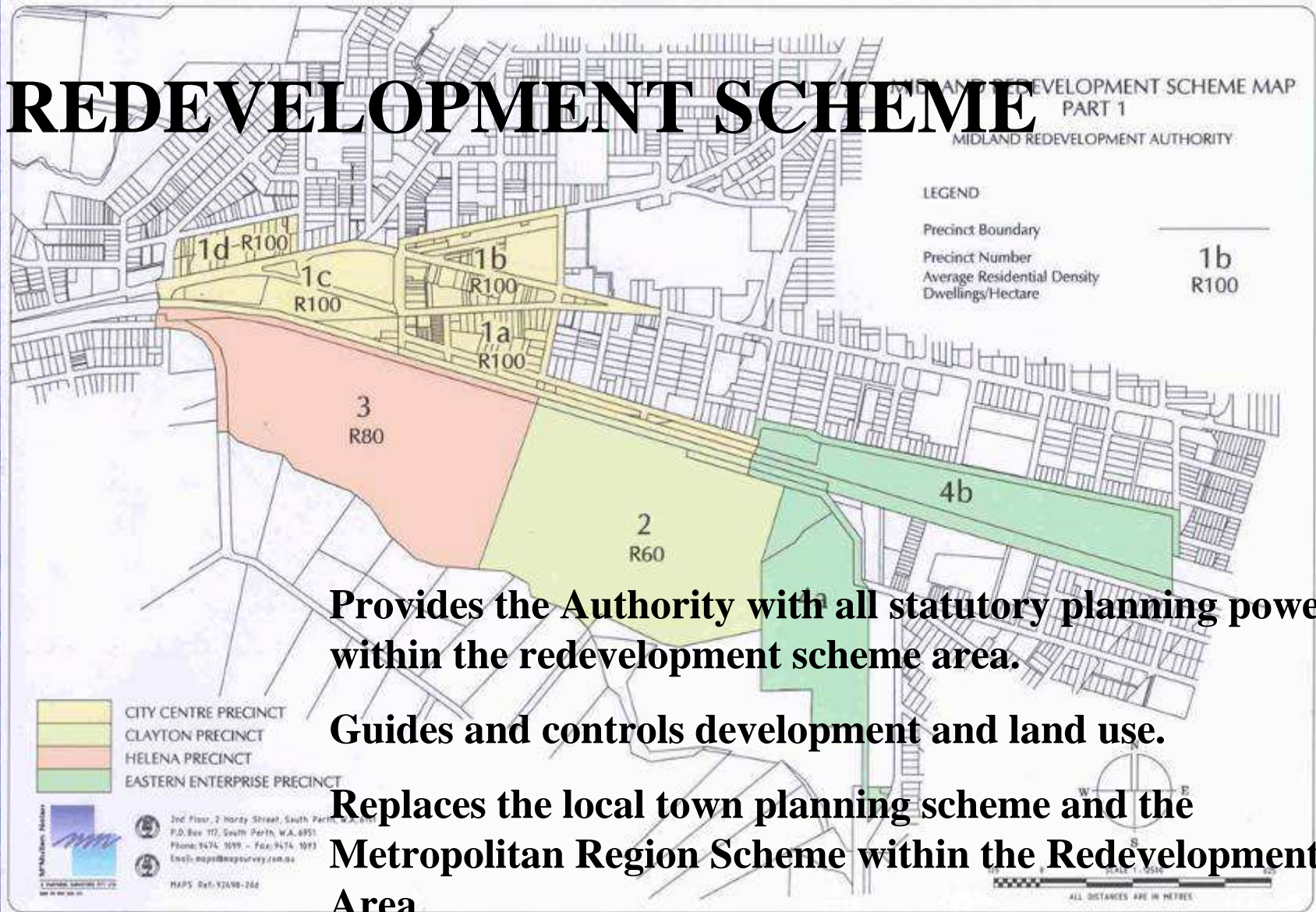


Midland Metro Concept Plan 2010

Australian Congress for New Urbanism

ACNU
sydney

REDEVELOPMENT SCHEME



Provides the Authority with all statutory planning powers within the redevelopment scheme area.

Guides and controls development and land use.

Replaces the local town planning scheme and the Metropolitan Region Scheme within the Redevelopment Area

SUPPORTING DOCUMENTS



PLANNING POLICIES, set out the Authority's proposed approach on a wide range of land use and other planning issues, for example Housing, Movement, Environment and Ecological Sustainable Development

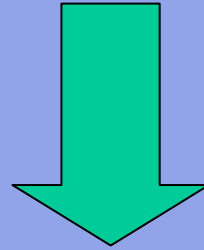
DESIGN GUIDELINES, setting out the preferred physical form and style of developments within the Redevelopment Area.

The **PLANNING POLICIES** and **DESIGN GUIDELINES** are all publicly advertised.



midlandmetro
Be a part of Midland's renaissance

Midland Charrette 1997



Midland Metro Concept Plan 2010

Australian Congress for New Urbanism

ACNU
sydney



City Centre

Australian Congress for New Urbanism

ACNU
sydney



City Centre 2010

Australian Congress for New Urbanism

ACNU
sydney

The Crescent – a new Main Street



midlandmetro
Be a part of Midland's renaissance



THE CRESCENT ELEVATION

Australian Congress for New Urbanism





Australian Congress for New Urbanism

ACNU
sydney

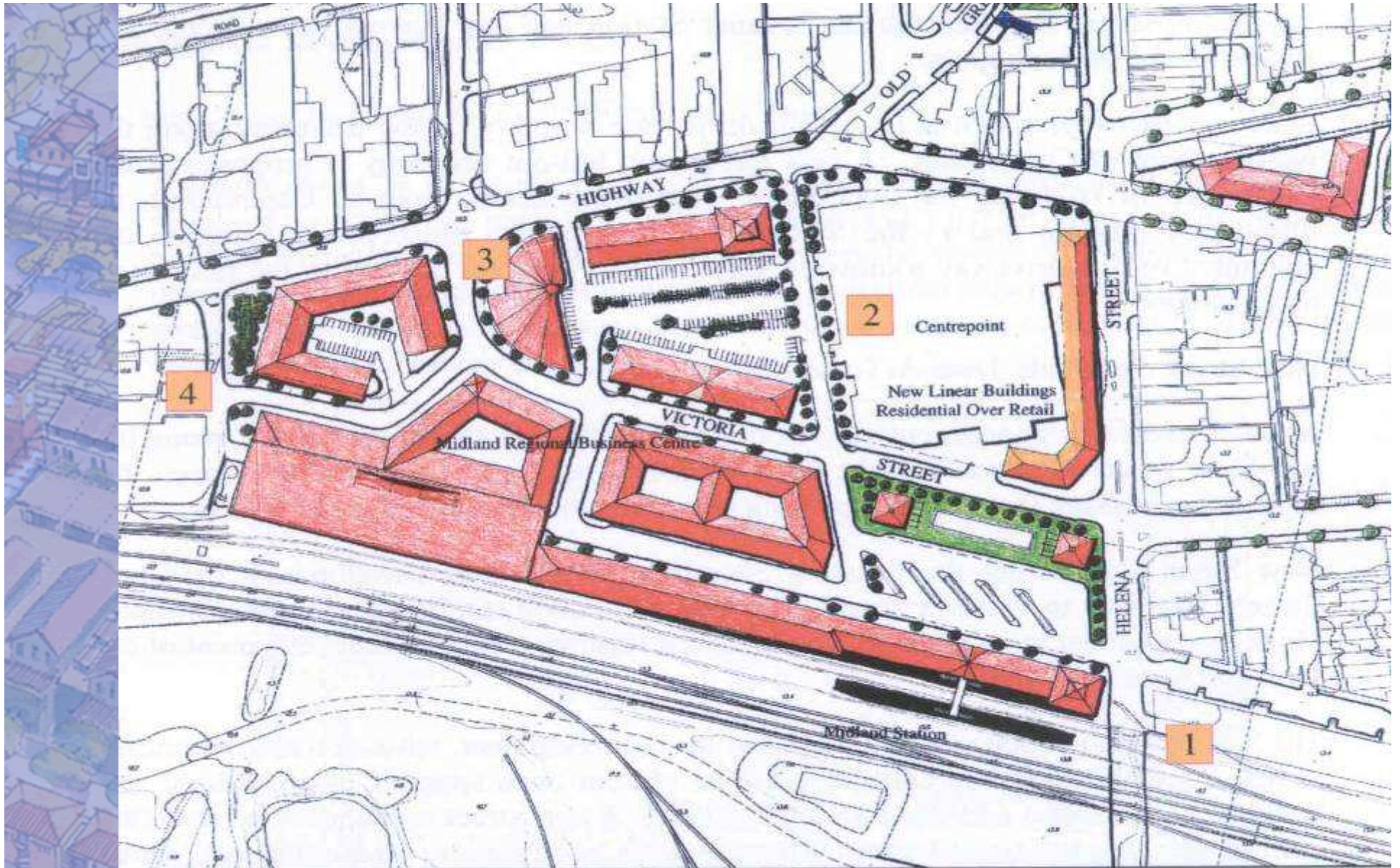


midlandmetro
Be a part of Midland's renaissance



Australian Congress for New Urbanism

ACNU
sydney



Train Station

Australian Congress for New Urbanism

ACNU
sydney



Train Station – 2010 TOD

Australian Congress for New Urbanism

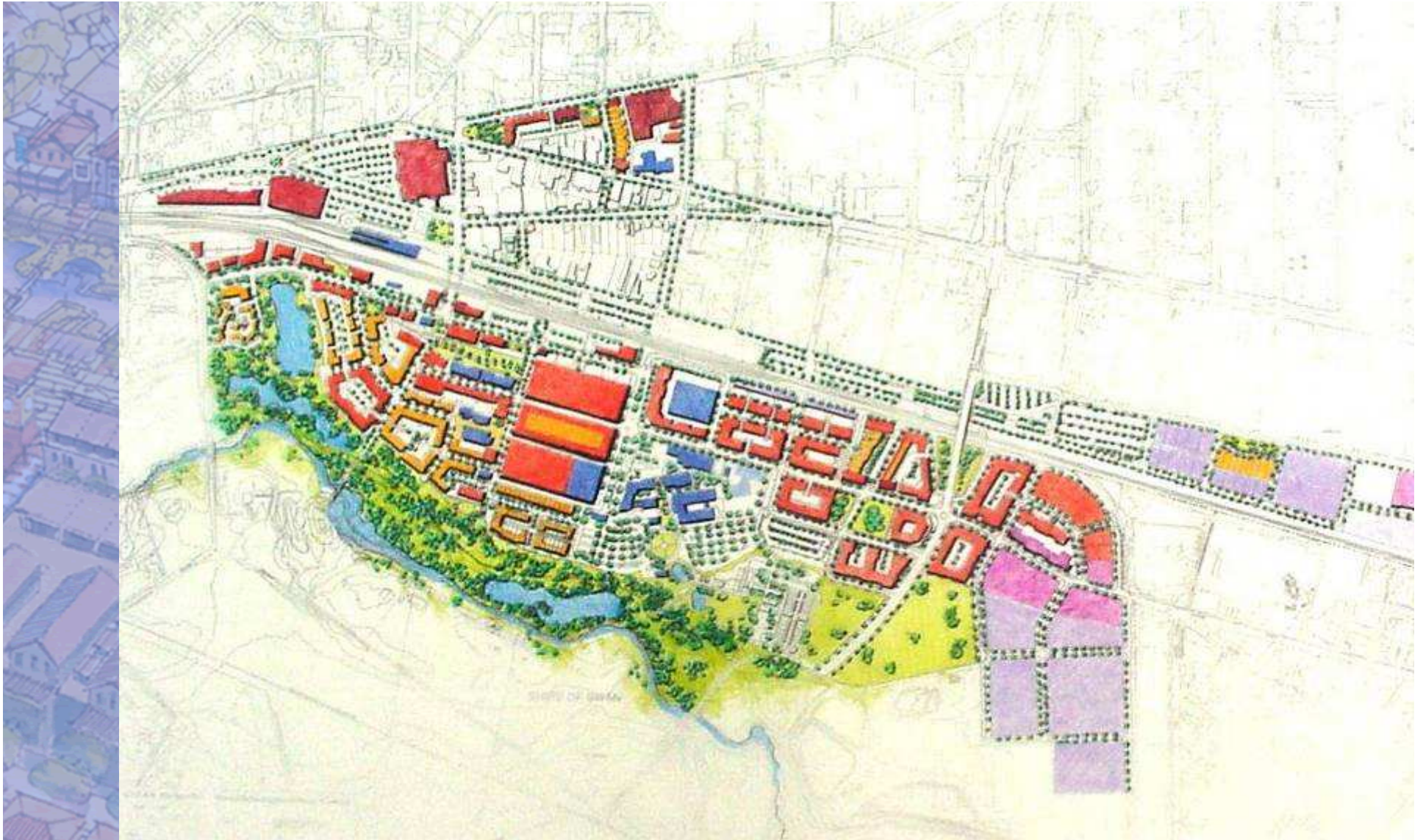
ACNU
sydney



Former Workshops – Helena 1997

Australian Congress for New Urbanism

ACNU
sydney



Former Workshops Draft Concept 2000

Australian Congress for New Urbanism

ACNU
sydney



Workshops 2010

Australian Congress for New Urbanism

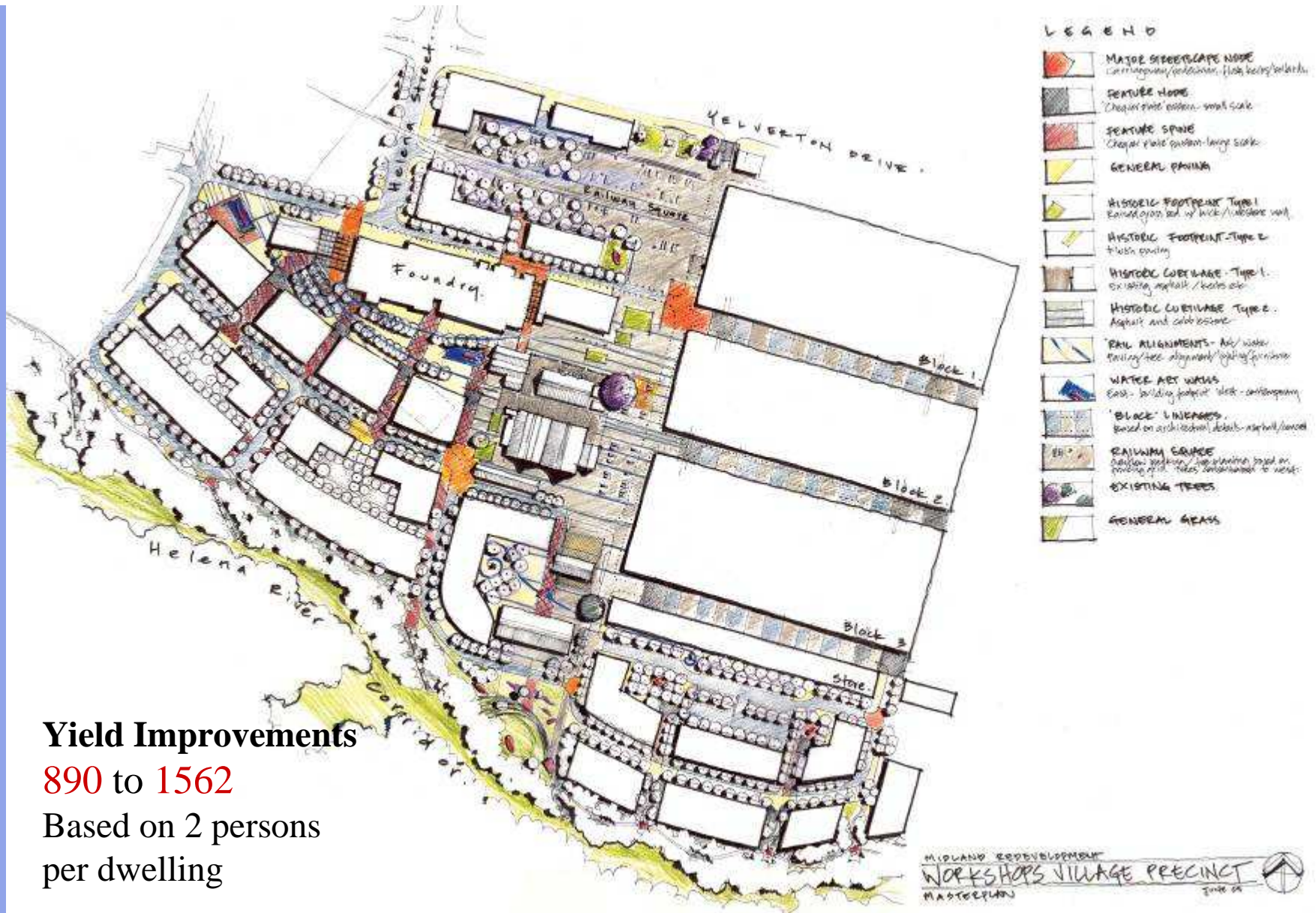
ACNU
sydney



Workshops Village

Australian Congress for New Urbanism

ACNU
sydney



Yield Improvements

890 to 1562

Based on 2 persons
per dwelling

Workshops Village Revised

Australian Congress for New Urbanism



MIDLAND REDEVELOPMENT
WORKSHOPS VILLAGE PRECINCT
MASTERPLAN
JUNE 04



midlandmetro
Be a part of Midland's renaissance



Australian Congress for New Urbanism

ACNU
sydney



Former Workshops – Clayton & Eastern Enterprise

Australian Congress for New Urbanism

ACNU
sydney



Clayton - WA Police

Australian Congress for New Urbanism

ACNU
sydney



Large Format Retail

Australian Congress for New Urbanism

ACNU
sydney



Australian Congress for New Urbanism

ACNU
sydney



Australian Congress for New Urbanism

